

Lavender Ridge Farms

Newsletter

Brrrrrrrrr!

This doesn't feel like the warm sunny state that I remember Texas always being. I don't know about you but I am freezing! The cold weather won't stop us from getting ready for the Ft. Worth Stock Show and Rodeo. We are busy right now making lots of products to be ready. Remember we will be there from January 15- February 7. If you are visiting the stock show be sure and stop by our booth. We will be in the Amon G. Carter building in booth #836.

Lavender update

Many of you have called wanting to know if your lavender plants can stand the freezing temperatures. As you can see in the picture to the right, the lavender is doing fine even being covered in snow and the freezing temperatures we are experiencing. Lavender plants are tougher than we think. Lavender like we grow here on the farm, Grosso and Provence can withstand temperatures several degrees below 0. Lavender is far more effected by warm humid temperatures than cold the extremes of winter.

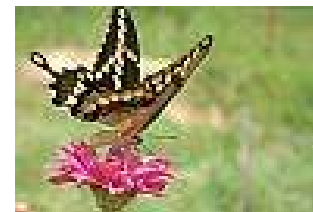
JANUARY, 2010



Anyone for lavender snow ice cream?



Think SPRING!



Upcoming events

Fort Worth Stock Show
Jan.-15-Feb. 7

fwssr.com

Farm reopens March?

Mid March- Cooking with
Lavender date TBA

April Spring plants available

April 23-25- Visit us at Germanfest in Muenster, TX

www.germanfest.net

May 29-31 You guessed it...
Fun Fun Fun at the Lavender
Ridge Farms!

[LAVENDER FESTIVAL](#)



Send us an email if you need to order anything for Valentines Day.

Reminder



The farm will be closed until March. We will keep you posted on the re-opening date.